



# VIBRO/DYNAMICS® RFQ – Measuring Equipment Data Sheet

Request for:  Quotation  Budgetary Estimate

## VIBRO/DYNAMICS Corporation

2443 Braga Drive  
Broadview, IL 60155-3941  
Telephone: 1-800-842-7668 or 708-345-2050  
Fax: 708-345-2225  
[www.vibrodynamics.com](http://www.vibrodynamics.com) Email: [Vibro@vibrodynamics.com](mailto:Vibro@vibrodynamics.com)

New Customer Quote No. \_\_\_\_\_

Customer Number: \_\_\_\_\_ Date: \_\_\_\_\_

(For Office Use Only)

Salesman: \_\_\_\_\_

Territory: \_\_\_\_\_

Name: \_\_\_\_\_ Phone: \_\_\_\_\_

Title: \_\_\_\_\_ Fax: \_\_\_\_\_

Company: \_\_\_\_\_ Email: \_\_\_\_\_

Address: \_\_\_\_\_ City: \_\_\_\_\_

State/Province: \_\_\_\_\_ Postal Code: \_\_\_\_\_ Country: \_\_\_\_\_

Send quote via:

Fax

Email

Mail

### I. MEASURING EQUIPMENT DATA

English

Metric

Machine Manufacturer: \_\_\_\_\_

Machine Model Number: \_\_\_\_\_ Serial Number: \_\_\_\_\_

Machine Type (CMM, optical comparator, surface plate, etc.): \_\_\_\_\_

Control Type:  CNC  Manual  Other (explain) \_\_\_\_\_

Machine Weight: \_\_\_\_\_

Maximum Part Weight: \_\_\_\_\_

Weight of Fixtures (if any): \_\_\_\_\_

Number of Mounting Points: \_\_\_\_\_

(See Section V on the next page for more on mounting points.)

### II. PROBE TRAVERSE ACTIONS (if applicable)

Moving Weight: \_\_\_\_\_ Which Axis? \_\_\_\_\_

Max. Acceleration (fill in those that apply): x-axis \_\_\_\_\_ y-axis \_\_\_\_\_ z-axis \_\_\_\_\_

Max. Velocity: \_\_\_\_\_

### III. BRIDGE/GANTRY TRAVERSE (if applicable)

Moving Weight: \_\_\_\_\_ Which Axis? \_\_\_\_\_

Max. Acceleration (fill in those that apply): x-axis \_\_\_\_\_ y-axis \_\_\_\_\_ z-axis \_\_\_\_\_

Max. Velocity: \_\_\_\_\_

### IV. PLEASE PROVIDE A GENERAL ASSEMBLY DRAWING, IF POSSIBLE

Machine Manufacturer: \_\_\_\_\_

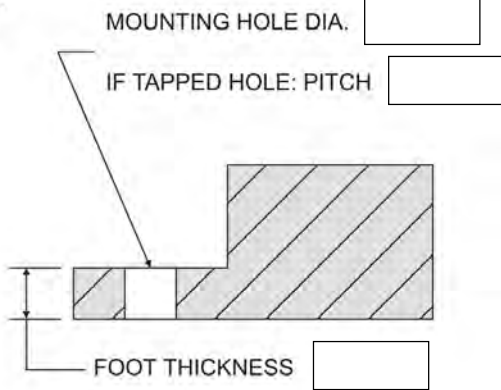
Model Number: \_\_\_\_\_

V. CHECK TYPE OF MOUNTING POINT AND LIST APPLICABLE DIMENSIONS

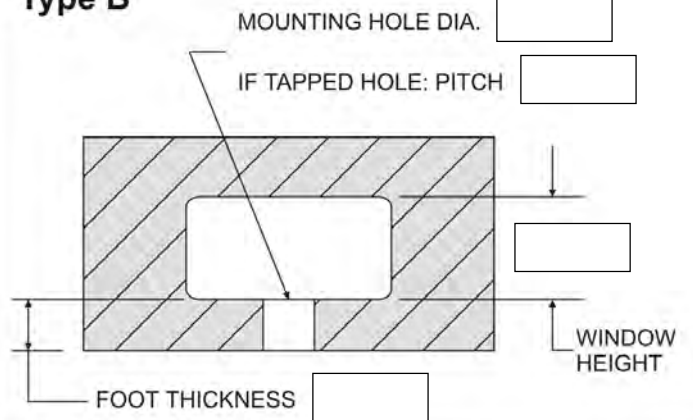
For the following data, please indicate units of measure:  English  Metric

If blind tapped hole: Mounting Hole Diameter \_\_\_\_\_ Pitch \_\_\_\_\_ Depth \_\_\_\_\_

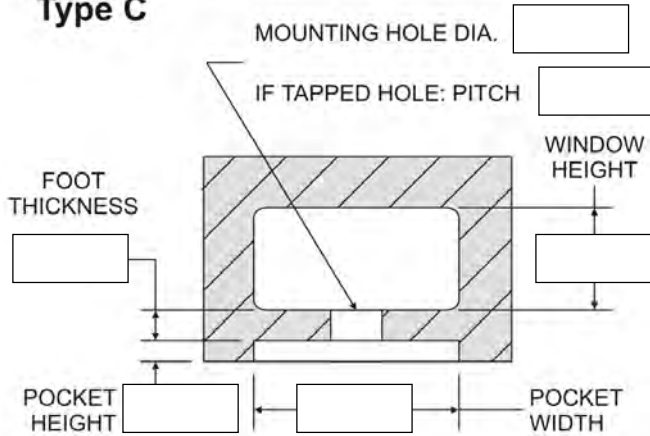
**Type A**



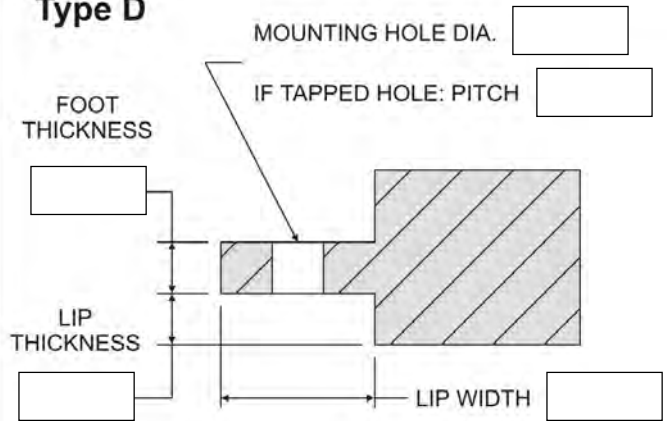
**Type B**



**Type C**



**Type D**



VII. Use the space below for sketches and/or comments on any special considerations.