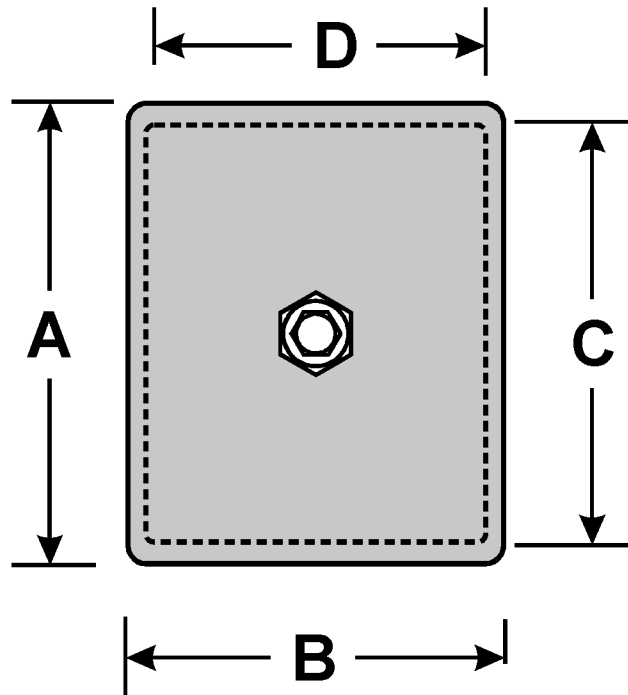


# MICRO/LEVEL® ISOLATOR SPECIFICATION SHEET - SERIES 7 -16



ISOLATOR MODEL		DIMENSION LETTERS (mm)							
STANDARD	LOD/SEN	A	B	C	D	E Min.*	E Max.*	F Min.	F Max.
7L	7LE	222	102	203	83	76	95	16	29
7M	7ME	222	102	194	73	95	114	16	20
9K	9KE	260	210	235	184	70	89	16	32
9L	9LE	260	210	235	184	79	98	16	32
9M	9ME	260	210	235	184	95	114	16	32
10K	10KE	308	257	271	221	83	102	19	38
10L	10LE	308	257	271	221	86	105	19	38
10M	10ME	308	257	271	221	102	121	19	38
12K	12KE	311	260	271	221	105	124	25	44
12L	12LE	311	260	221	106	127	25	38	44
12M	12ME	311	260	271	221	124	143	25	44
16K	16KE	413	337	378	302	127	152	32	57
16L	16LE	413	337	378	302	127	152	32	57
16M	16ME	413	337	378	302	146	171	32	57

## Notes:

- Series 16 are furnished with Interlocks.
- Dimension "E" is the "UNLOADED" Isolator Height  $\pm 1.5$  mm. Isolator Height is adjustable for Leveling Purposes.
- Dimension "F" is variable. Leveling Adjustment Screw Diameter & Length depend on the Machine Mounting Hole Diameter, Foot Thickness and Load.
- Dimensions A, B, and E are Nominal.
- Lod/Sen is a Load-Sensing Electronic Fine Tuning Feature.

