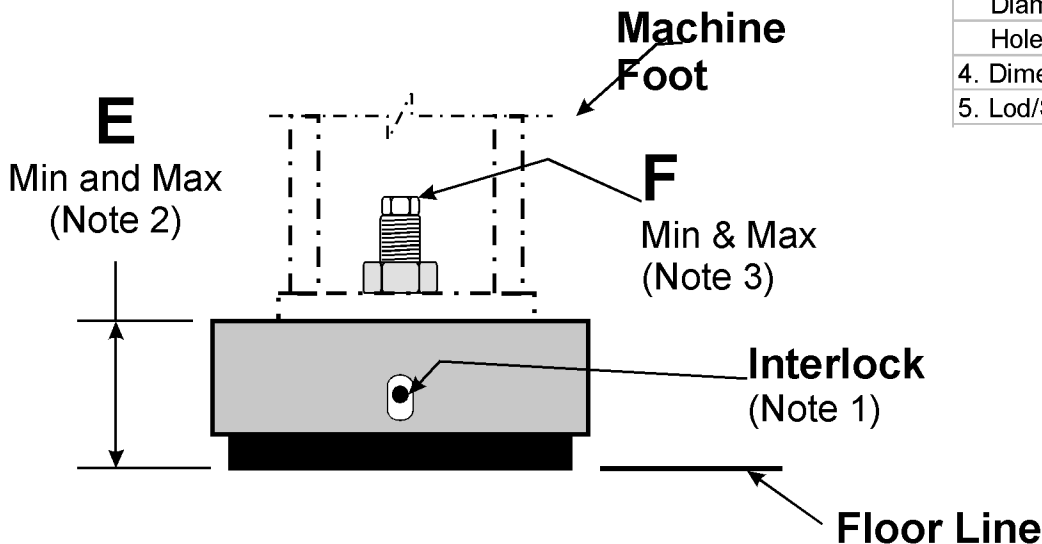
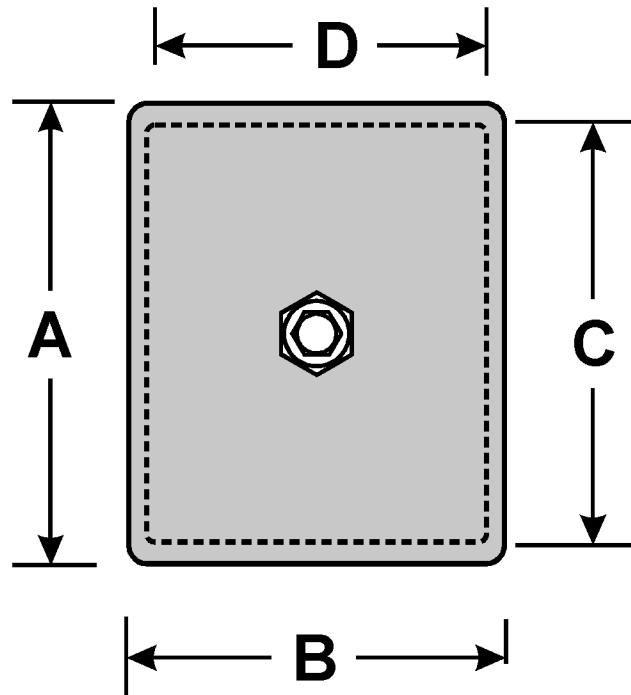


# MICRO/LEVEL® ISOLATOR SPECIFICATION SHEET - SERIES BFM



ISOLATOR MODEL		DIMENSION LETTERS (mm)							
STANDARD	LOD/SEN	A	B	C	D	E Min.*	E Max.*	F Min.	F Max.
BFM1340	LCM1340	521	368	470	318	152	178	38	70
BFM1150	LCM1150	521	368	470	318	162	187	38	70
BFM1230	LCM1230	521	368	470	318	178	203	38	70
BFM1350	LCM1350	521	362	470	318	219	244	51	76
BFM1160	LCM1160	514	362	470	318	229	254	51	76
BFM1170	LCM1170	514	362	470	318	244	270	51	76
BFM2660		673	495	610	432	219	244	57	89
BFM2676		673	495	610	432	219	244	57	89
BFM2690		673	495	610	432	219	244	57	89
BFM26100		673	495	610	432	219	244	57	89
BFM26110		673	495	610	432	210	235	57	89
BFM26135		673	495	610	432	210	235	57	89
BFM26180		673	495	610	432	210	235	57	89

**Notes:**

1. All BFM Series Isolators are furnished with Interlocks.
2. Dimension "E" is the "LOADED" Isolator Height + or - 3 mm.  
Isolator Height is adjustable for Leveling Purposes.
3. Dimension "F" is variable. Leveling Adjustment Screw Diameter & Length depend on the Machine Mounting Hole Diameter, Foot Thickness and Load.
4. Dimensions A, B, and E are Nominal.
5. Lod/Sen is a Load-Sensing Electronic Fine Tuning Feature.